

FACT SHEET



DISCOVERY MULTISCAN3

High Performance Data Verification & 100% Print Quality Inspection Solution for Label Applications

PRODUCT OVERVIEW

Discovery Multiscan3 is the latest generation of variable data verification and print quality inspection solution from Lake Image Systems. Based on a 64bit Windows platform, Discovery Multiscan3 leads the way in performance, ease of use and flexibility.

Multiscan3 pulls together the images and data from a wide variety of camera and scanner based technologies, and allows the implementation of any number of Discovery software tools to read, control, inspect, verify, log and report – providing 100% quality inspection and security print data integrity.

Reading Tools

Discovery Multiscan3 utilizes the latest generation of area and line scan cameras, including Maxscan, our new linear contact scanner, to capture high quality, high resolution images. These images are then processed using a comprehensive range of reading tools to detect, extract and decode all forms of barcodes, QRcodes and OCR codes within the images for subsequent processing by Multiscan3's integrity, inspection, control, and reporting applications.

Verification, Inspection & Integrity Tools

Multiscan3 comes equipped with a comprehensive range of verification, inspection and integrity software tools to ensure your documents are always 100% correct. Sequence check, data matching and presence/absence software tools provide variable data verification from page to page printing including duplex operations. Inspection tools detect print defects such as print registration, colour deviation and print quality. Integrity tools such as Sequence Check, and Database/File Look-Up and Match, verifies that each and every printed label is produced with the highest levels of integrity compared to the original customer data job files.

Conditional Processing

Multiscan3 tools can be invoked conditionally by detecting a specific barcode, an image change or a trigger in the data. Combining multiple tools, enables complex inspection tasks to be performed and saved with the specific label job profile.

Comprehensive MIS integration and Web Reporting

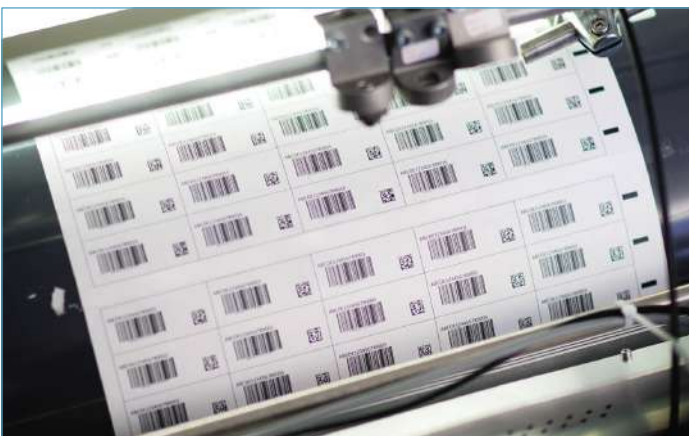
Multiscan3 maintains a detailed audit file (including statuses and errors types) of all labels which can be downloaded as a CSV. Reprint / remake files, manifests or control files can be created for MIS and postal online systems or roll maps for label web jobs. Full web based reporting is available to meet customer requirements.

Fast, Flexible & Robust

Discovery Multiscan3's simultaneous capabilities and 64bit software platform, ensures the system is super fast, responsive and able to read and process extremely large (1GB+) images, normally required for high-speed, high print quality inspection requirements. Even at press speeds of up to 350 meters/min (1150 ft./min), Multiscan3 is perfectly suited for reliable integrity assurance for a range of applications including mail-pieces, labels, plastic cards whilst simultaneously providing 100% print quality inspection of every **printed page**.

Open & Scalable

Suitable for virtually all brands of printing, mailing, bindery and finishing equipment, Multiscan3's proven modular design, enables clients to purchase only the base system and software licences they need and then purchase additional tools as their requirements grow.



FACT SHEET



FEATURES

Verification

- Correct sequencing
- Correct paper stock
- Identify duplicate / missing items
- Presence / absence of text, logos & images
- X Y location, orientation & measurement
- Address Masking
- Front / Back duplex
- MICR Elements e.g. Check/Account Numbers

Inspection

- Missing or blocked inkjets
- Print quality, streaks, hickies, stray toner & voids
- Print registration targets
- CMYK Colour Variation (Delta E)
- Barcode Grading

Integrity

- Batch Control, File Audit and File Look-up
- Full Text (IQ) Matching
- Print file reconciliation

Control

- Divert, Tray, batch, Mark/Tag or Bundle
- Operator Alarms / Warnings / Stop
- Dual Monitor Web Viewing (Optional)

Reporting & Outputs

- Full networked reporting
- 100% Audit log & Job Accounting
- Operator / job / production logs
- QC Retains - Image Archive at defined intervals
- Roll to Roll Job Sheet generation

System

- Conditional Processing - page or variable content
- System Security - Admin and Operator Logins



SYSTEM

Input Devices

- Area Scan Cameras - MaxRead, GigE, Firewire, Analogue
- Line Scan Cameras - Up to 16K Line scan
- Maxscan Linear Scanner - 600DPI, Colour/Mono, 3 widths
- Triggering: High resolution encoders (5000 ppr)
- Lighting: Long life L.E.D. Optional back-light

Outputs

- Serial & Network Outputs
 - XML Outputs
 - ADF System Integration
- ### Processor / Interface
- OS: Windows™ 7 (64bit)
 - Chassis: Industrial Rack
 - Power: 110-230VAC
 - Approvals: CE Certified
 - Interface: Touch Screen Monitor, keyboard & mouse

Performance

- Min. defect sizes: sub 1mm²
- Processing Time: >50 reads per second
- Press Speeds: up to 350 meters/min (1150 ft./min)

Installation / Integration

- On Press: Standard press mounting kits
- Rewinders: Web stability frame, web guide and path rollers available if necessary
- Remote technical support and training

SUPPORTED CODE FORMATS

Text / OCR

- Full Alphanumeric font trainable by system operator.

ID & 2D Barcodes

- EAN 13 & EAN 8
- OMR
- Datamatrix
- PDF417
- QR Code
- UPC A & UPC E
- Code 128, Code 39 & Code 93
- 2/5 discrete & Interleaved
- Pharmacode

Postal Barcodes

- US IMB, POSTNET, PLANET
- UK MailMark™, 4State code
- Australian Post
- Japanese Post

Barcode Grading

- To ISO/IEC 15416:2000
- UPC A & UPC E
- Code 128 & Code 39
- EAN-8, EAN-13, EAN-128
- 2/5 interleaved
- Codebar

Electronic

- RFID

Lake Image Systems Ltd
The Forum Icknield Way Tring
Hertfordshire HP23 4JX England
T: +44 (0)1442 892700
F: +44 (0)1442 892792
E: sales@lakeimage.com



Lake Image Systems Inc
205 Summit Point Drive Suite 2
Henrietta NY 14467 USA
T: 001 585 321 3630
F: 001 585 321 3788
E: salesna@lakeimage.com

Lake Image Systems France
165 Avenue du Prado
13272 MARSEILLE
CEDEX 08 FRANCE
T: +33 (0)4 91 17 90 62
F: +33 (0)4 91 17 90 63
E: euLIS@lakeimage.com

Lake Image Systems Asia
33 Ubi Avenue 3 #03-07,
The Vertex, Tower B
SINGAPORE 408868
T: +65 6509 0192
E: LISasia@lakeimage.com

Copyright ©2021 Lake Image Systems.
All rights reserved.



TYPICAL APPLICATIONS

- **Web Printing/Labels (offset, digital, narrow web presses & security printing)** - Barcode grading, print quality inspection, streak/void detection, front/back web matching, variable data legibility, track & trace, missing/duplicate piece detection
- **Cut Sheet Printing (digital and traditional printing presses)** - base stock verification, missing or duplicate piece detection
- **Bindery (stitchers, collators, booklet makers, folders, polywrappers)** - Signature verification, signature matching, missing/duplicate detection, collation control (booklet makers/collators), tray/bundle sorting. Read & print personalisation
- **Plastic Card Processing (phone/loyalty card processing, card attachers)** - Card/carrier matching, missing/duplicate detection, pin number verification and logging, scratch off verification, automated bundling/stacking, read & print personalisation
- **Mail Processing (inserting & addressing equipment)** - Matching, IMB quality verification, static verification, collation control, double, missing/duplicate piece detection, tray/bundle sorting. Read & Print applications
- **Fulfilment (manual and automated kitting)** - Missing/duplicate kit detection, kit content verification, job level reporting