

FACT SHEET



DISCOVERY Multiscan for Chestny ZNAK

A comprehensive print quality inspection solution for Chestny ZNAK codes



DISCOVERY Multiscan for Chestny ZNAK is a comprehensive print quality verification solution for the Chestny ZNAK codes printed on labels and packaging by high-speed, digital web and cutsheet printers.

Using the latest in industrial camera technology and sophisticated data verification software tools, the solution reads, grades and logs the variable Chestny ZNAK 2D DataMatrix code, immediately after they are printed.

DISCOVERY Multiscan for Chestny ZNAK replaces partial, intermittent and manual quality control checks, enabling continuous print production and higher throughputs. When a code error is detected, there are options for operator alerts, error mapping, and/or stopping the line, as required for the application.

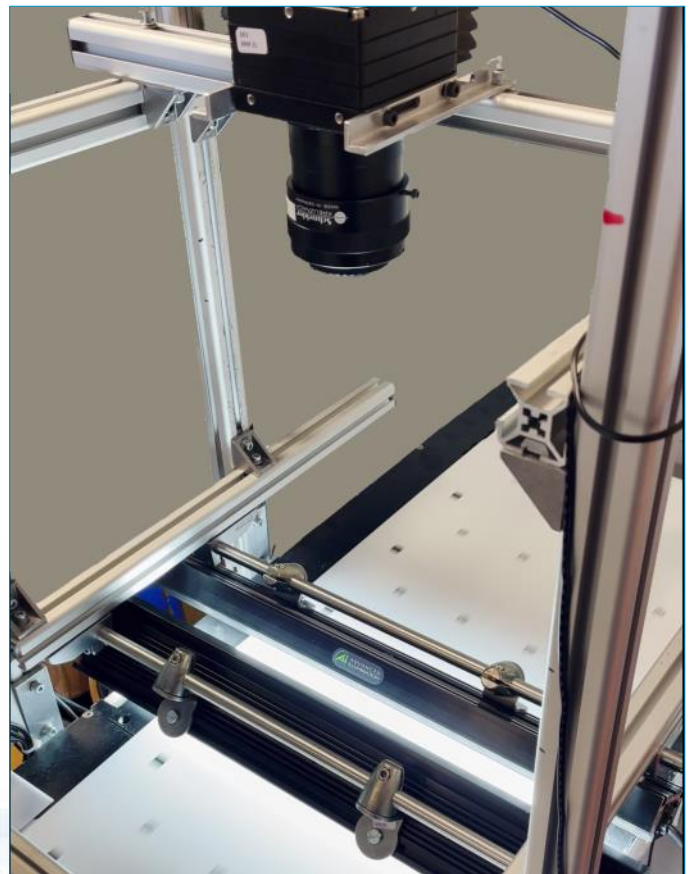
KEY FEATURES:

- **Compact & Affordable** - complete, versatile & modular camera print inspection system for production environments
- **Intelligent HD Viewing** - 100% real-time web/sheet viewing
- **High Performance** - up to 350 meters/min (1150 ft./min) and web widths up to 450mm (17.7")
- **Accurate & Reliable** - read and verify Chestny ZNAK barcodes down to 10mm x 10mm in size
- **Barcode Grading** - optionally grade every code, at print time, to industry standards ISO/IEC 15415 & ISO/IEC 15416, if required
- **Full Reporting** - record every Chestny ZNAK code and its inspection result, allowing required information to be sent to a track and trace system
- **Equipment Control** - alarms, diverts, equipment stop options
- **Intuitive Design** - quick set-up & easy to use
- **Fully Installed & Supported** - be operational in just a few days.

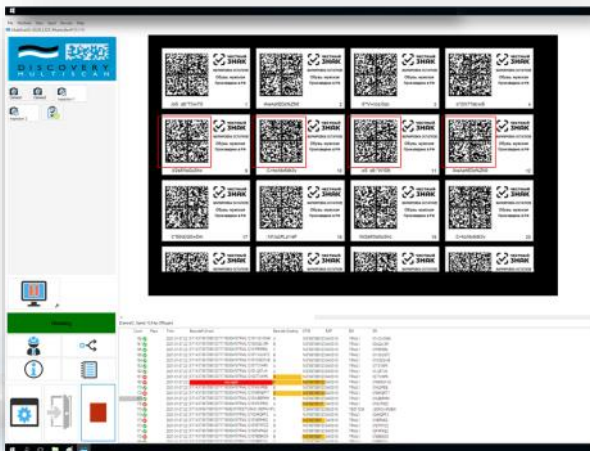
WHY INSPECT?

- **Meet Regulations** - mandated by the Center for Research in Perspective Technologies (CRPT) for print quality
- **Automate Processes** - streamline existing QA processes and save on labour whilst improving productivity
- **Customise Reports** - automate data upload to National Track & Trace systems
- **Recycle rejected codes** - identify and reuse codes that fail the print inspection, saving you money.

DISCOVERY Multiscan for Chestny ZNAK easily integrates into your existing print workflow, equipment, and optionally with your factory control systems, providing real-time data feedback on the inspection result, in the format required, for every label, package or sheet.



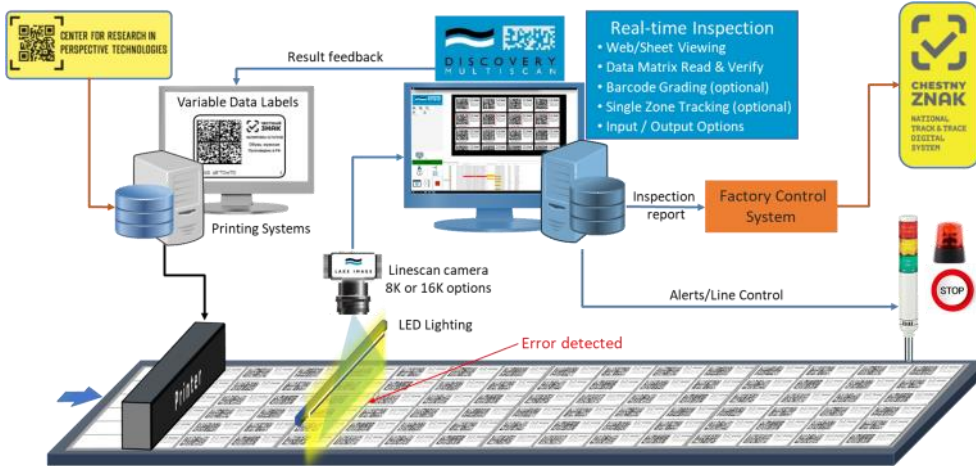
DISCOVERY Multiscan for Chestny ZNAK with line scan inspection camera technology and LED lighting



DISCOVERY Multiscan for Chestny ZNAK for HD viewing with high speed data verification & barcode grading



FACT SHEET



Lake Image Systems Ltd
The Forum Icknield Way Tring
Hertfordshire HP23 4JX England
T: +44 (0)1442 892700
F: +44 (0)1442 892792
E: sales@lakeimage.com



Lake Image Systems Inc
205 Summit Point Drive Suite 2
Henrietta NY 14467 USA
T: 001 585 321 3630
F: 001 585 321 3788
E: salesna@lakeimage.com

Lake Image Systems Asia
33 Ubi Avenue 3 #03-07,
The Vertex, Tower B
SINGAPORE 408868
T: +65 6509 0192
E: LISasia@lakeimage.com

Copyright ©2021 Lake Image Systems.
All rights reserved.

FEATURES

100% HD Web/Sheet Viewing

- Uninterrupted operation & 100% HD full monitoring
- Real-time onscreen viewing of defects

Data Verification

- Read Chestny ZNAK DataMatrix code
- Verify/match data against database or file
- Verify data sequencing
- Multi-lane label support

Print Quality

- Barcode Grading to ISO 15415 standards (optional)

Equipment Control

- Configurable I/P & O/P: Signal to Line Stop/Beacon
- Zonal Tracking: Single zone tracking (optional)
- Light tower & audible alarms (optional)
- Marking & flagging device (optional)

Easily Set-up

- An intelligent & intuitive user interface
- Smart, quick system set-up with minimal sensor adjustments

Reporting & Data Integration

- Record every Chestny ZNAK code and its inspection result, allowing required information to be sent to a track and trace system
- Image Archive: on local or network drive SSD (optional)

SYSTEMS

Camera / Lighting / Triggers

- Mono linescan cameras: 8K or 16K dependant of web width and resolution required
- Lighting: Long life L.E.D line lights
- Triggering: High resolution encoders

Processor / Interface

- Processor: Intel® Core™ High Performance PC
- OS: Windows™ 10 (64bit)
- Chassis: Industrial rack
- Power: 110-230VAC
- Approvals: CE Certified
- Interface: Touch screen monitor, keyboard & mouse

Performance

- Min. barcode size: 10mm x 10mm
- Press speeds: up to 350 meters/min (1150 ft./min)
- Web widths: up to 450 mm (17.7")

Installation / Integration

- On Press: Standard press mounting kits
- Rewinders: Web stability frame, web guide and path rollers available if necessary
- Integration with Inspection Station/Divert/Marking equipment, as required
- On site installation & training. Remote technical support.

ADVANTAGES

- **Machine independent** - Can be retro-fitted to most existing packaging or label printing and finishing equipment
- **Reliable** - 100% monitoring and uninterrupted detection of full print area
- **Flexible** - Ability to deploy broad a set of camera and scanner technologies to capture a variety of defects
- **User-Friendly** - Faster set-up & logical GUI layout
- **Upgradable** - Deploy multiple DISCOVERY inspection tools for complex defect detection and variable data inspection, as required
- **Supported** - Comprehensive maintenance contracts featuring remote diagnostics.

BENEFITS

- **Lower Costs** - Automatically capture defects before reaching unacceptable levels. Ensures adherence to Chestny ZNAK
- **Improved Productivity** - Automate labour intensive print quality inspection processes
- **Meet Chestny ZNAK regulatory needs** - for code quality, readability and reliability for Chestny ZNAK Track and Trace system
- **Less Scrap / Less Waste** - Immediately prevent costly scrapping of large runs of defect print
- **Mitigate risks** - Ensure all jobs comply to Chestny ZNAK and other government regulations.

